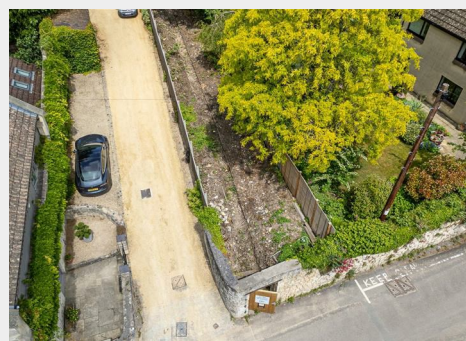
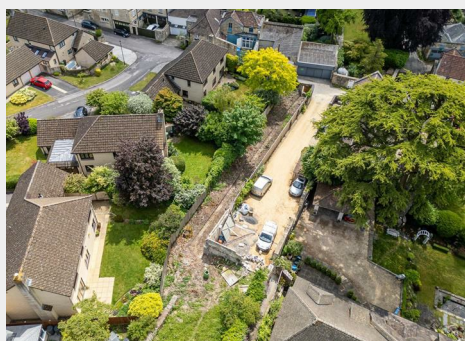


Beckford Gardens Upper Lansdown Mews, Bath, BA1 5HF

Auction Guide Price +++ £90,000



- FOR SALE BY ONLINE AUCTION
- WEDNESDAY 17TH SEPTEMBER 2025
- VIRTUAL TOUR NOW ONLINE
- VIEWINGS – REFER TO DETAILS
- DOWNLOAD FREE LEGAL PACK
- SEPTEMBER LIVE ONLINE AUCTION
- UNIQUE BATH OPPORTUNITY
- 0.35 ACRE HISTORIC GARDENS
- LEISURE | AMENITY | EVENT SPACE
- EXTENDED 8 WEEK COMPELTION

Hollis Morgan – SEPTEMBER LIVE ONLINE AUCTION – Freehold UNIQUE BATH OPPORTUNITY comprising 0.35 Acres of HISTORIC TERRACED GARDENS located in CENTRAL BATH with scope for wide range of uses | stp

Beckford Gardens Upper Lansdown Mews, Bath, BA1 5HF

Accommodation

*** BEST AND FINAL OFFERS ***

BEST & FINAL OFFERS TO BE SUBMITTED BY FRIDAY 22ND AUGUST @ 12 NOON

The full auction legal pack is complete and can be downloaded via the Hollis Morgan website
All offers must be submitted via the online offer form on the Hollis Morgan website
The vendors are seeking offers on the condition the buyer can exchange contracts ASAP on auction terms with an 8 week completion or earlier by mutual consent.

If you have any questions please contact auction HQ - 0117 973 6565 (option 1)

FOR SALE BY LIVE ONLINE AUCTION

ADDRESS | Beckford Gardens, Upper Lansdown Mews, Lansdown, Bath BA1 5HF

Lot Number 56

The Live Online Auction is on Wednesday 17th September 2025 @ 17:30
Registration Deadline is on Monday 15th September 2025 @ 16:00

The Auction will be streamed LIVE ONLINE via the Hollis Morgan website & you can chose to bid by telephone, proxy or via your computer.
Registration is a simple online process - please visit the Hollis Morgan auction website and click "REGISTER TO BID"

THE GARDENS

A Freehold parcel of land in Prime Central Bath with pedestrian access leading off Upper Lansdown Mews.
Beckford Gardens is a relatively intact section of historic garden, terraces and walls that encircle what was William Beckford's nursery garden just North of his house on Lansdown Crescent.
The garden and the walls are listed and were built around 1825-1830 with the involvement of the architect Henry Edmund Goodridge.
It is a relatively complete wall and terraced garden with the terraces to the North, East and West representing the first and only surviving evidence of Beckford's Rise, a well documented designed landscape.
The terraces themselves were used by Beckford to access the Embattled Gateway, a castellated folly which served as the entry to Beckford created picturesque landscape.
The gardens themselves, comprise; two terraces with a pathway leading up from Upper Lansdown Mews.

Tenure - Freehold

Rights of Way - We understand there are NO rights of way over the land (please refer to online legal pack)

Floor plan



EPC Chart

9 Waterloo Street
Clifton
Bristol
BS8 4BT

**hollis
morgan**

Tel: 0117 973 6565
Email: post@hollismorgan.co.uk
www.hollismorgan.co.uk

Hollis Morgan Property Limited, registered in England, registered 7275716.
Registered address, 5 Upper Belgrave Road, Clifton, Bristol BS8 2XQ

Auction Property Details Disclaimer

Hollis Morgan endeavour to make our sales details clear, accurate and reliable in line with the Consumer Protection from Unfair Trading Regulations 2008 but they should not be relied on as statements or representations of fact.

Please refer to our website for further details.